

PLANTING LEGEND

PLANTING LEGEND						
SYMBOL	QUANTITY	SIZE	BOTANICAL	COMMON	WATER	PLANT TYPE
	3	5 GALLON	AEONIUM 'SUNBURST'	SUNBURST PINWHEEL	VERY LOW, LOW	SUCCULENT
	8	5 GALLON	AGAVE 'BLUE FLAME'	BLUE FLAME AGAVE	LOW	SUCCULENT
	2	24" BOX	BRACHYCHITON POPULNEUS	BOTTLE TREE	MEDIUM	TREE
	4	5 GALLON	DIANELLA TASMANICA 'DESTINY'	DESTINY DIANELLA	LOW, MEDIUM, EXTRA IN SUMMER	PERENNIAL
	6	5 GALLON	ECHEVERIA 'AFTERGLOW'	AFTERGLOW ECHEVERIA	LOW	SUCCULENT
	5	5 GALLON	EUPHORBIA TIRUCALLI 'STICKS ON FIRE'	RED PENCIL TREE	VERY LOW	SUCCULENT
	6	5 GALLON	HESPERALOE P. 'PERPA' BRAKELIGHT	BRAKELIGHTS RED YUCCA	VERY LOW	SUCCULENT
	5	5 GALLON	HESPERALOE PARVIFLORA 'YELLOW'	YELLOW YUCCA	VERY LOW, EXTRA IN SUMMER	SUCCULENT
	5	5 GALLON	KALANCHOE LUCIAE	PADDLE PLANT	LOW	SUCCULENT
	5	5 GALLON	LAVANDULA STOECHAS	SPANISH LAVENDER	LOW	SHRUB
	5	5 GALLON	LOMANDRA LONGIFOLIA 'BREEZE'	DWARF MAT RUSH	LOW	GRASS
	2	24" BOX	MAGNOLIA GRANDIFLORA 'LITTLE GEM'	LITTLE GEM DWARF SOUTHERN MAGNOLIA	MEDIUM, EXTRA IN SUMMER	TREE
	6	5 GALLON	MUHLENBERGIA CAPILLARIS PLUMETASTIC	PINK MUHLY 'PLUMETASTIC'	MEDIUM	GRASS
	1	36" BOX	OLEA EUROPAEA	OLIVE	LOW	TREE
	37	15 GALLON	PODOCARPUS MACROPHYLLUS	YEW PINE	MEDIUM	CONIFER
	7	FLAT (16)	SENECIO SERPENS	DWARF SENECIO	LOW	GROUND COVER



Olea europaea
Olive

Brachyichiton populneus
Bottle Tree

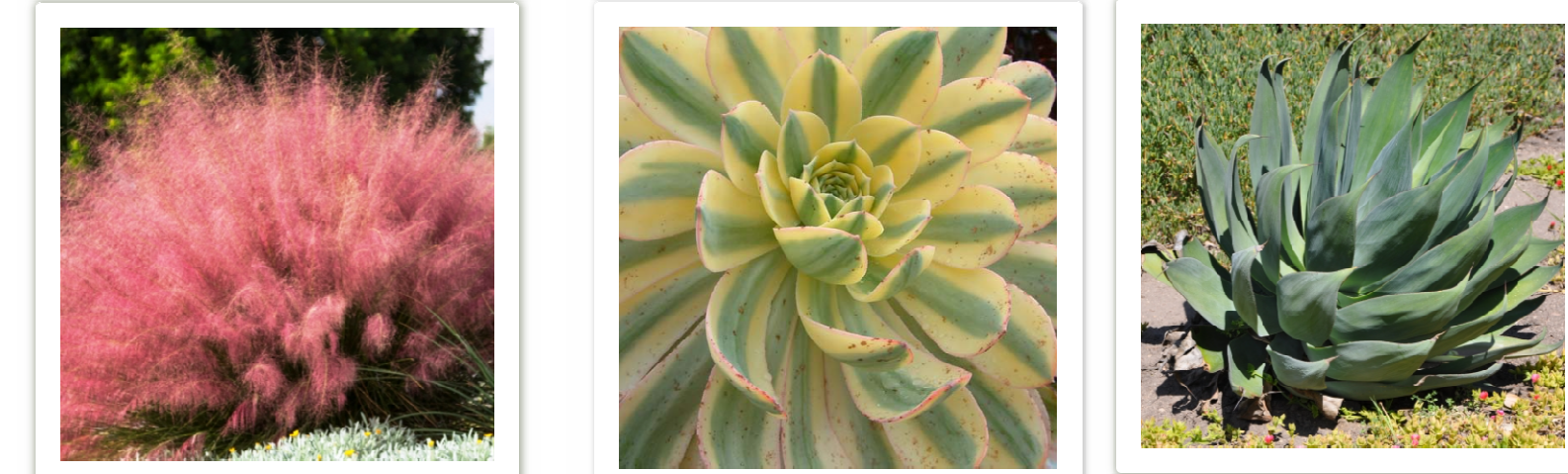
Lavandula stoechas
Spanish Lavender



Senecio serpens
Dwarf Senecio

Dianella tasmanica 'Destiny'
Destiny Dianella

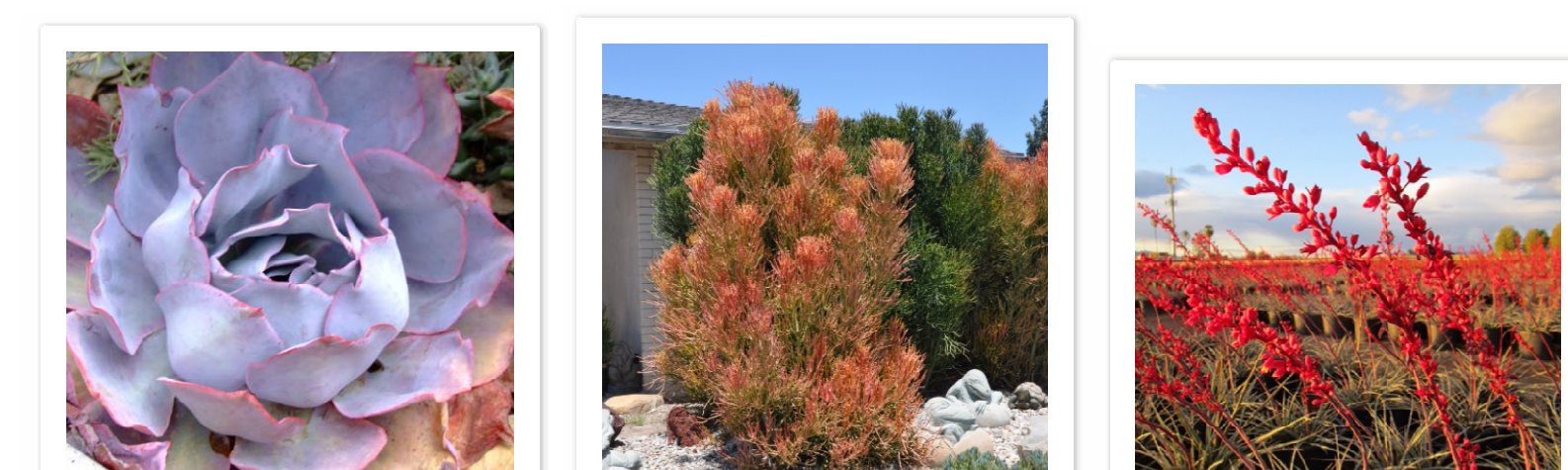
Lomandra longifolia 'Breeze'
Dwarf Mat Rush



Muhlenbergia capillaris 'Plumetastic'
Pink Muhly 'Plumetastic'

Aeonium 'Sunburst'
Sunburst Pinwheel

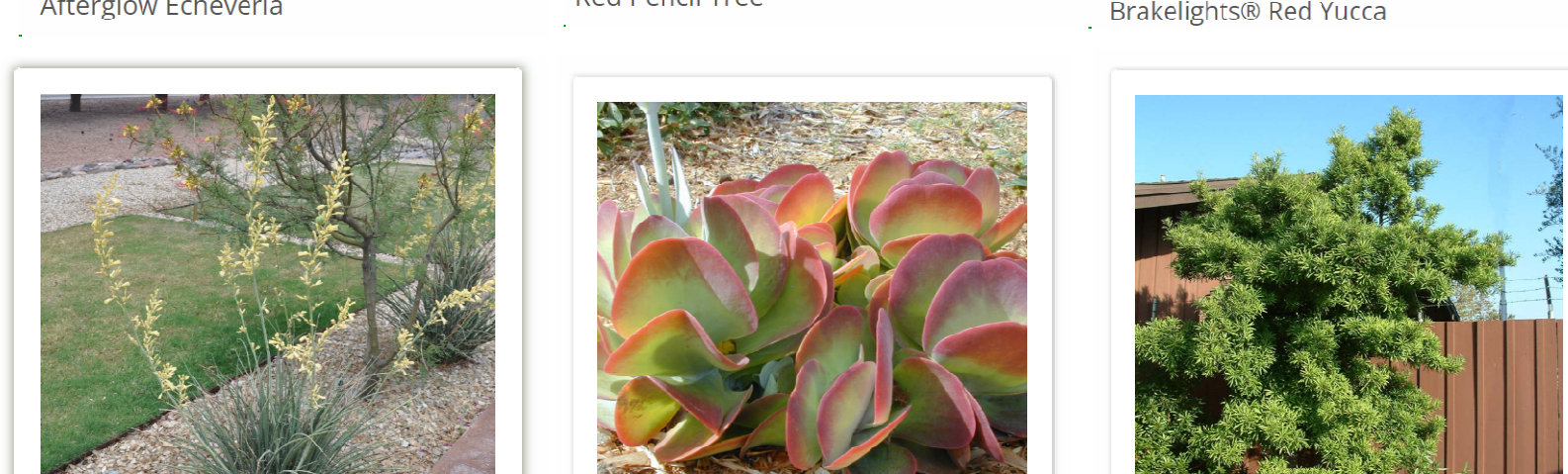
Agave 'Blue Flame'
Blue Flame Agave



Echeveria 'Afterglow'
Afterglow Echeveria

Euphorbia tirucalli 'Sticks on Fire'
Red Pencil Tree

Hesperaloe p. 'Perpa' Brakelight®
Brakelights Red Yucca

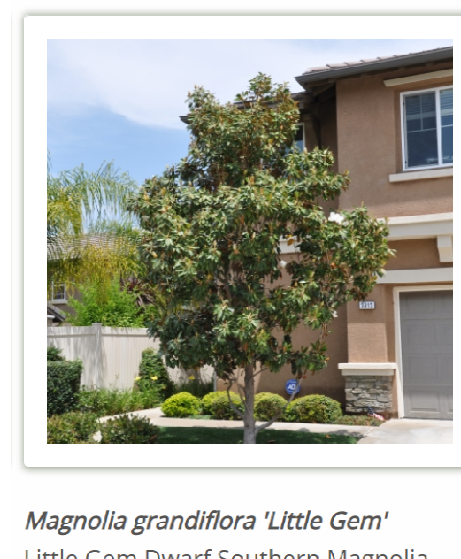


Hesperaloe parviflora 'Yellow'
Yellow Yucca

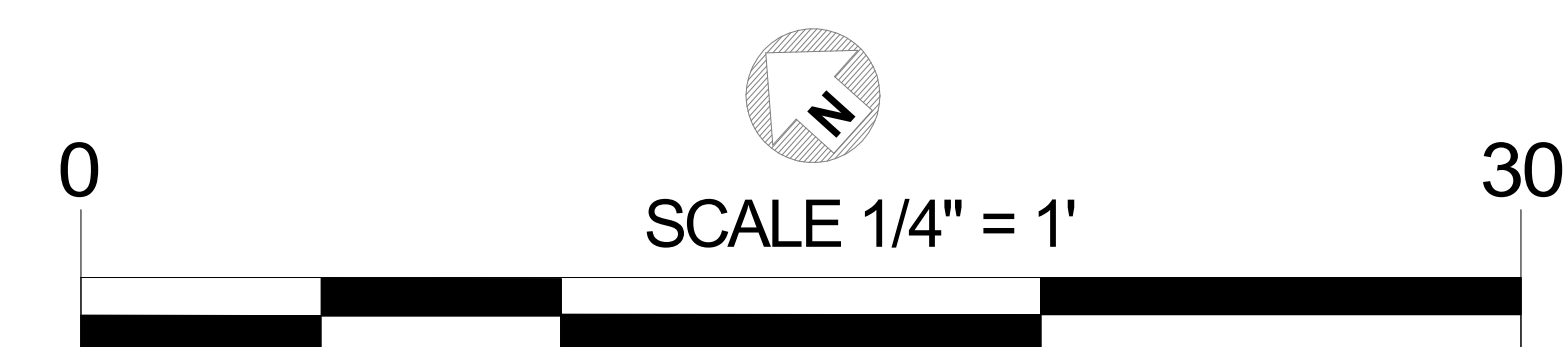
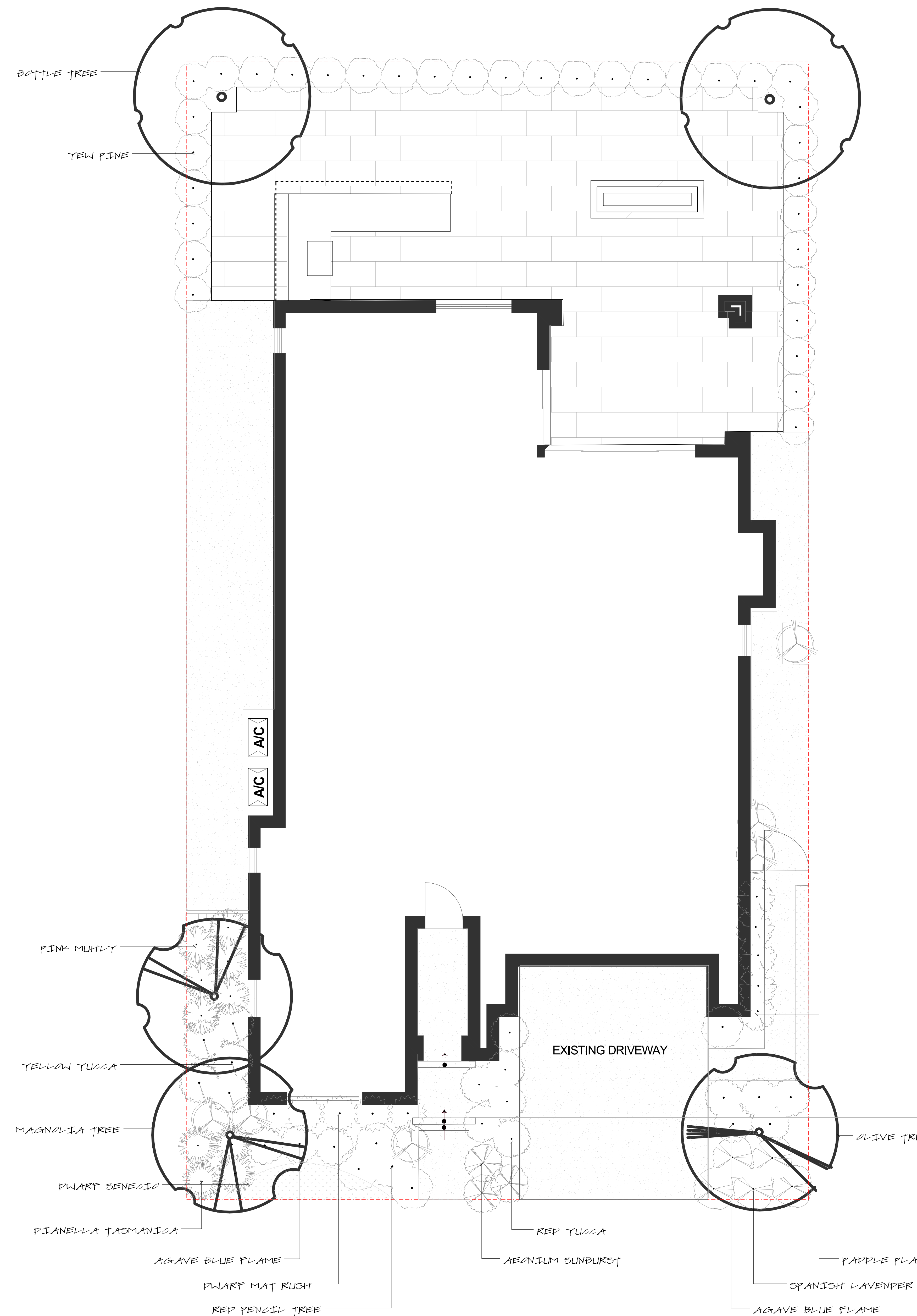
Kalanchoe luciae
Paddle Plant

Podocarpus macrophyllus
Yew Pine

LANDSCAPE CALCULATIONS - FRONTYARD		
TOTAL LANDSCAPE AREA SQFT	462	
TOTAL HARDSCAPE AREA SQFT	89	19.3%
TOTAL SOFTSCAPE AREA SQFT	373	80.7%
LANDSCAPE CALCULATIONS - REAR YARD		
TOTAL LANDSCAPE AREA SQFT	1624	
TOTAL HARDSCAPE AREA SQFT	1434	88.3%
TOTAL SOFTSCAPE AREA SQFT	190	11.7%

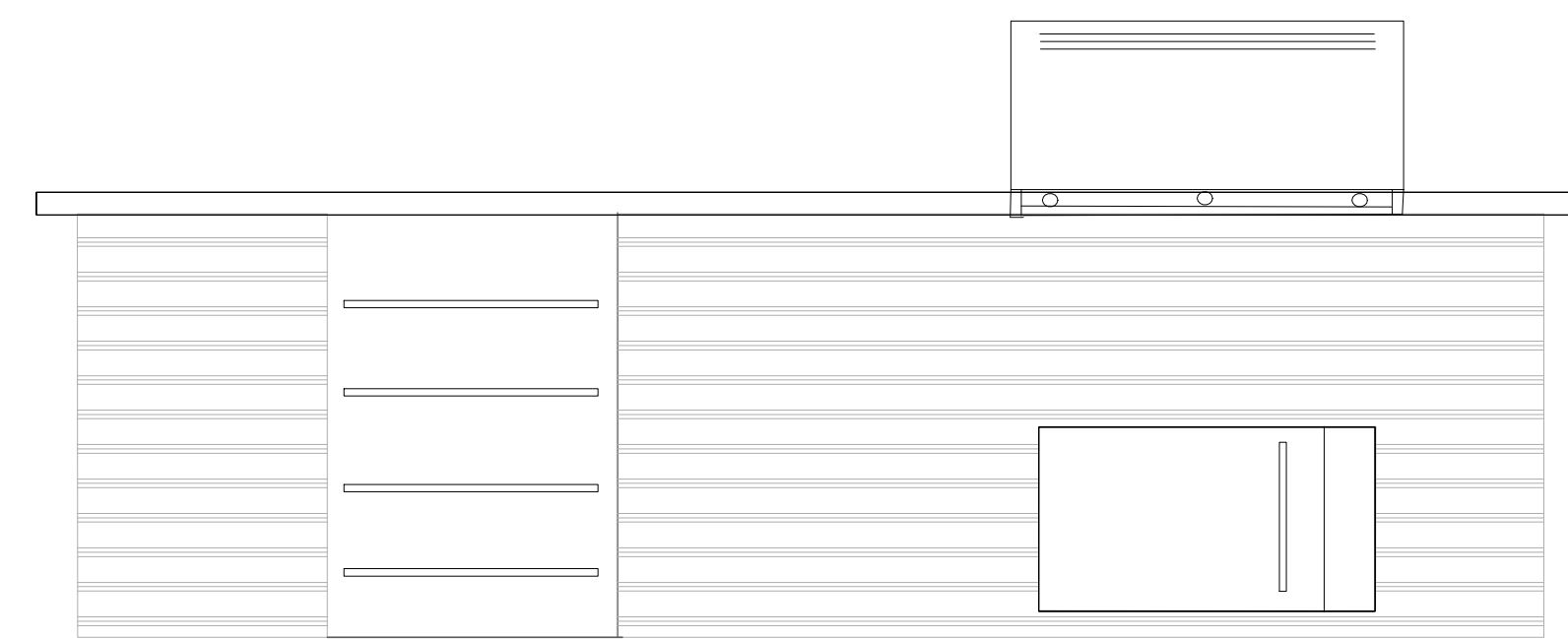


Magnolia grandiflora 'Little Gem'
Little Gem Dwarf Southern Magnolia

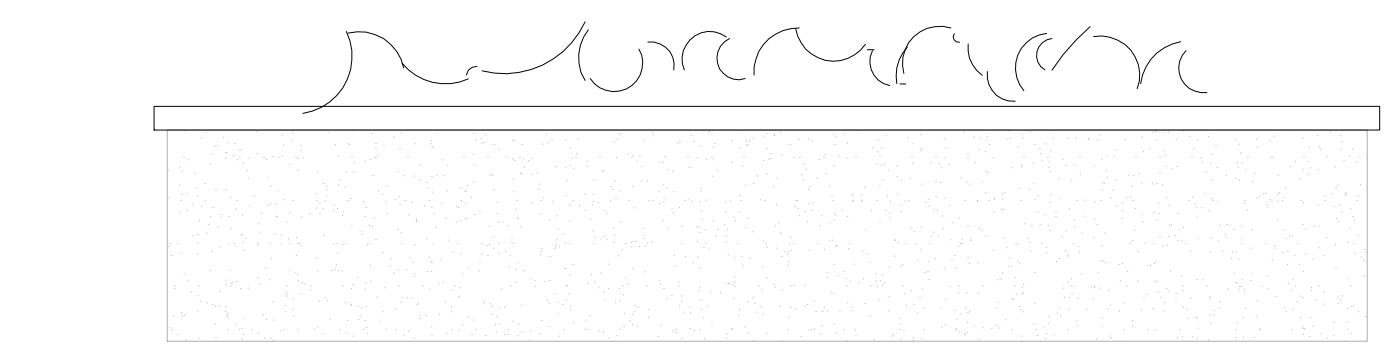
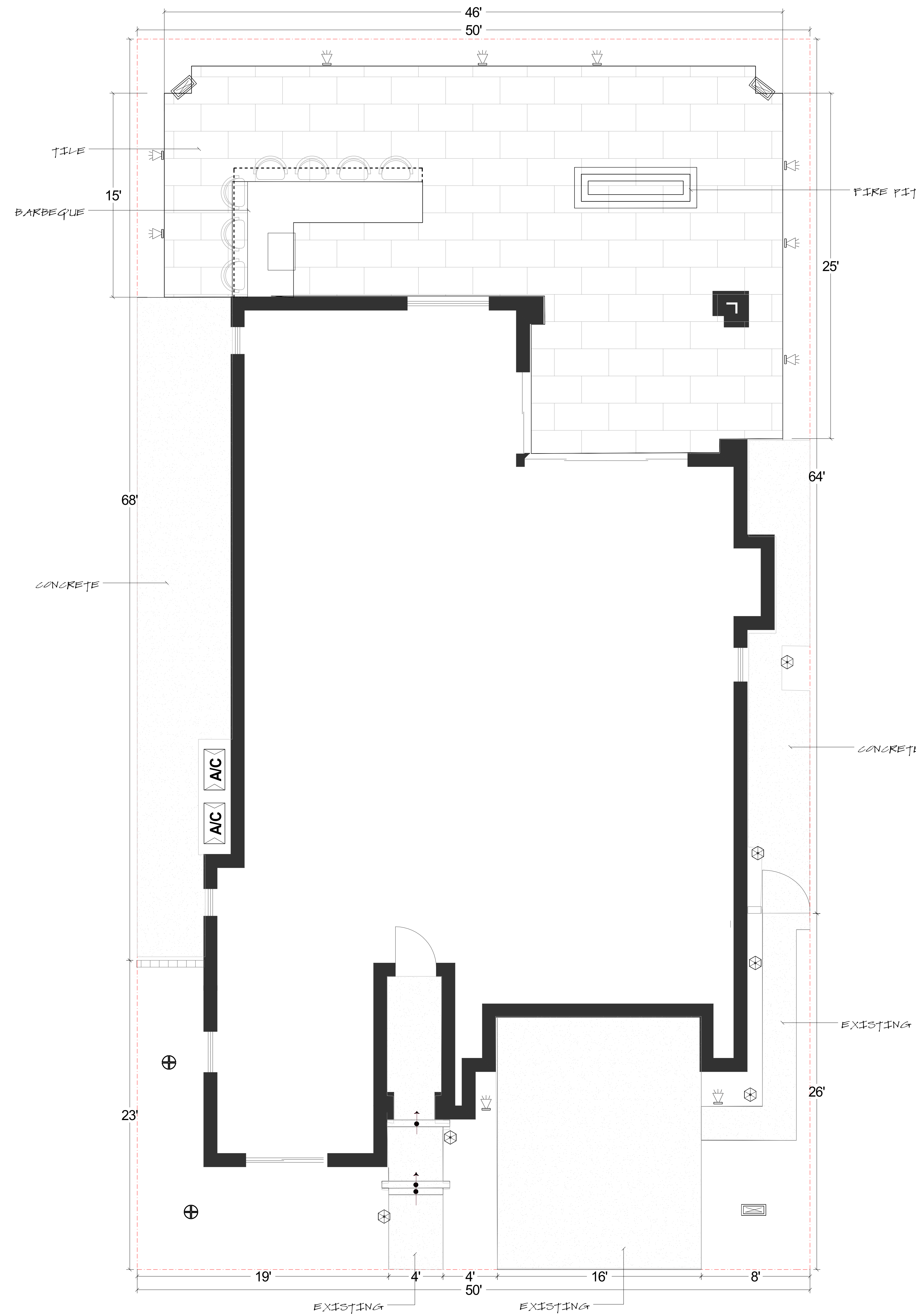


REVISION	TIME
5	
4	
3	
2	
1	
0	INCLUDED
CONCEPT-10/21	INCLUDED
DATE	FEE

LANDSCAPE LEGEND

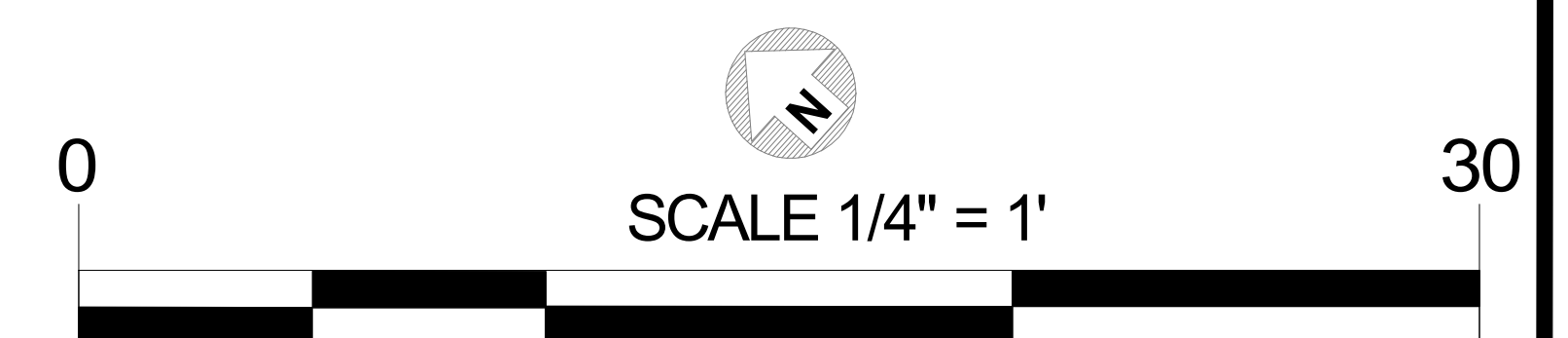


BARBEQUE - CONCEPT DESIGN



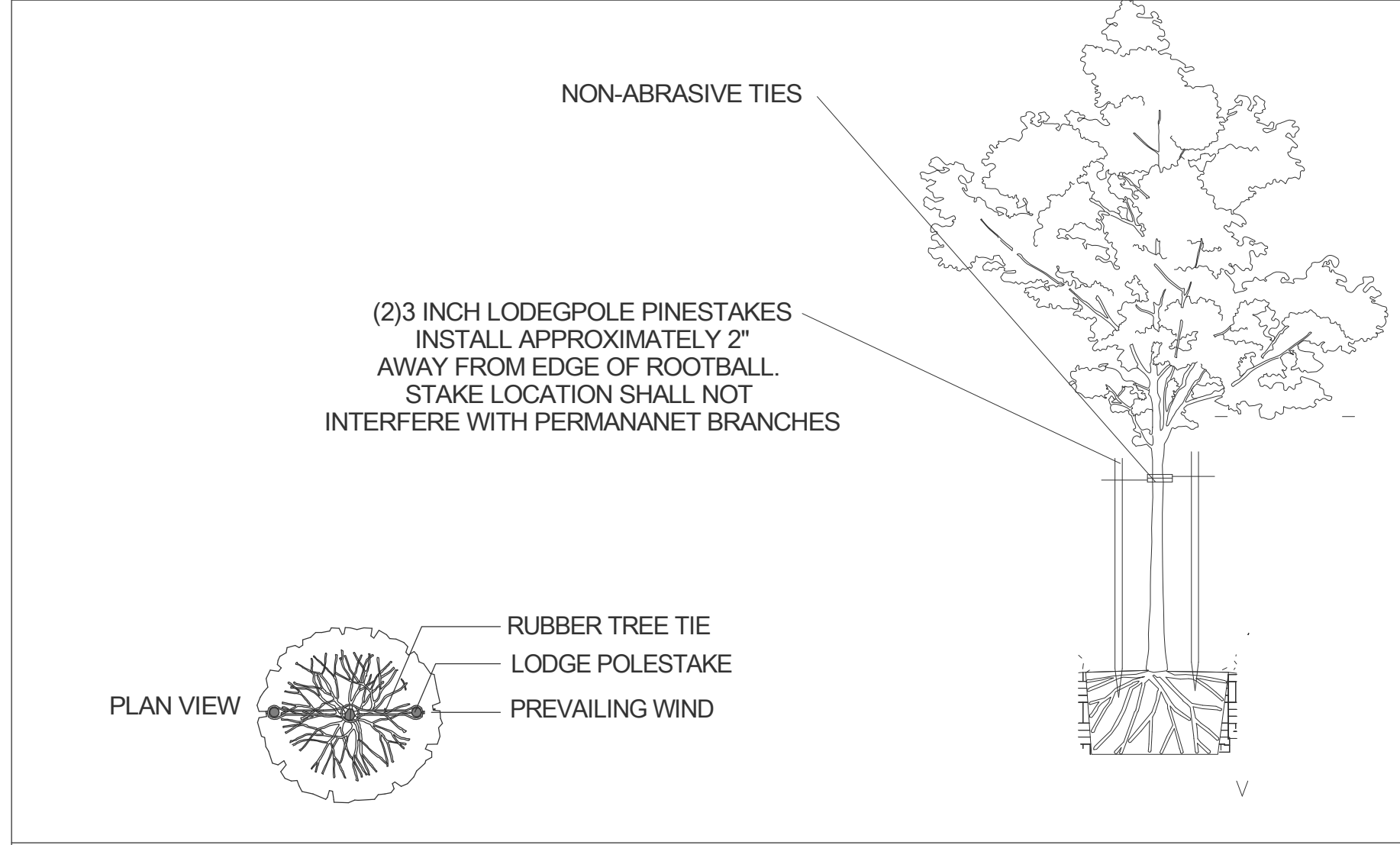
FIRE PIT - CONCEPT DESIGN

LIGHTING LEGEND	QTY	SYMBOL
SPOTLIGHT	10	
PATHLIGHT	6	
IN-GROUND WELL	2	
FLOOD LIGHT	3	
DECK LIGHT	0	
TOTAL WATTS	FIXTURES	21

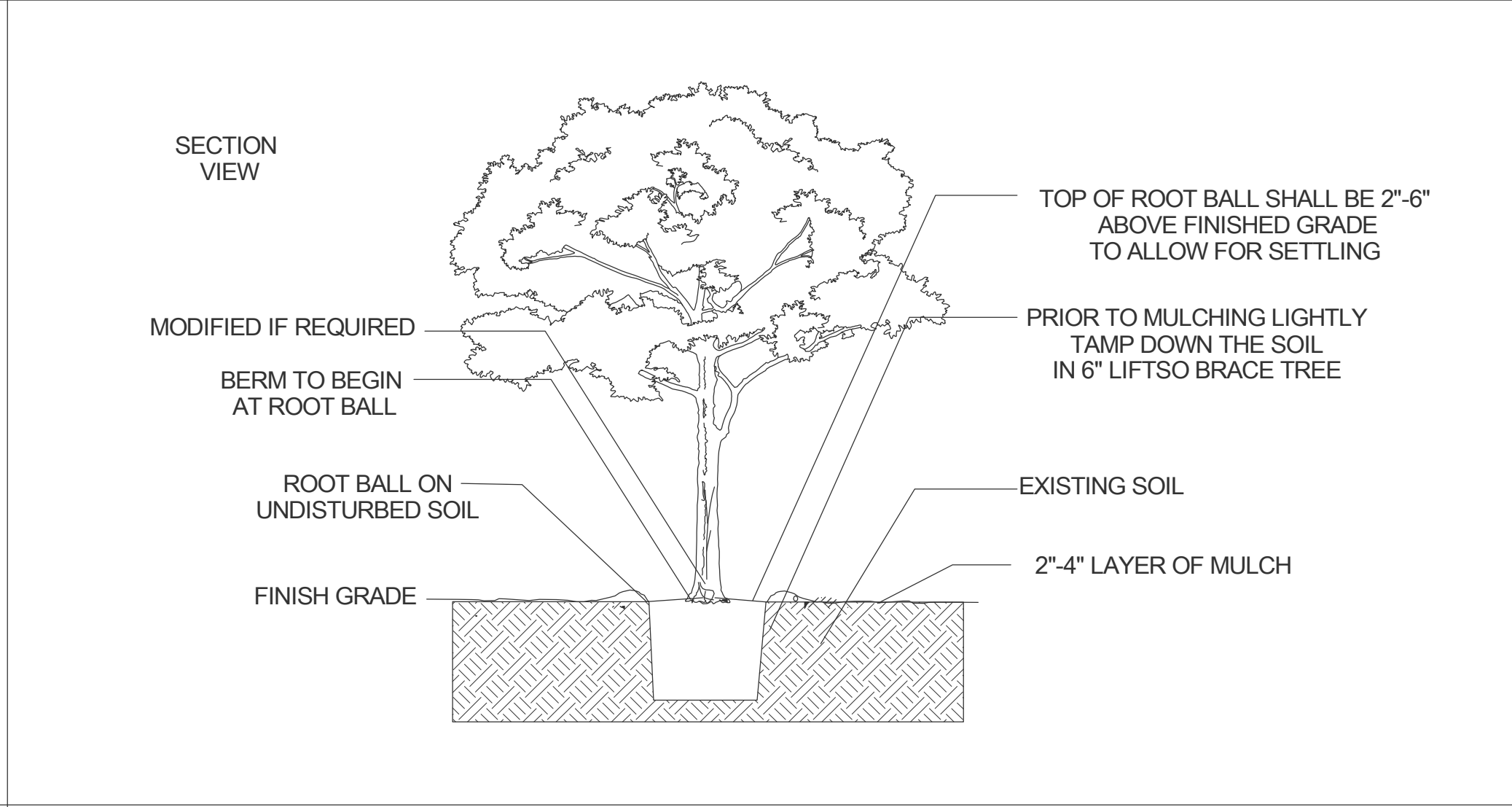


REVISION	TIME
5	
4	
3	
2	
1	
0	INCLUDED
SET	DATE

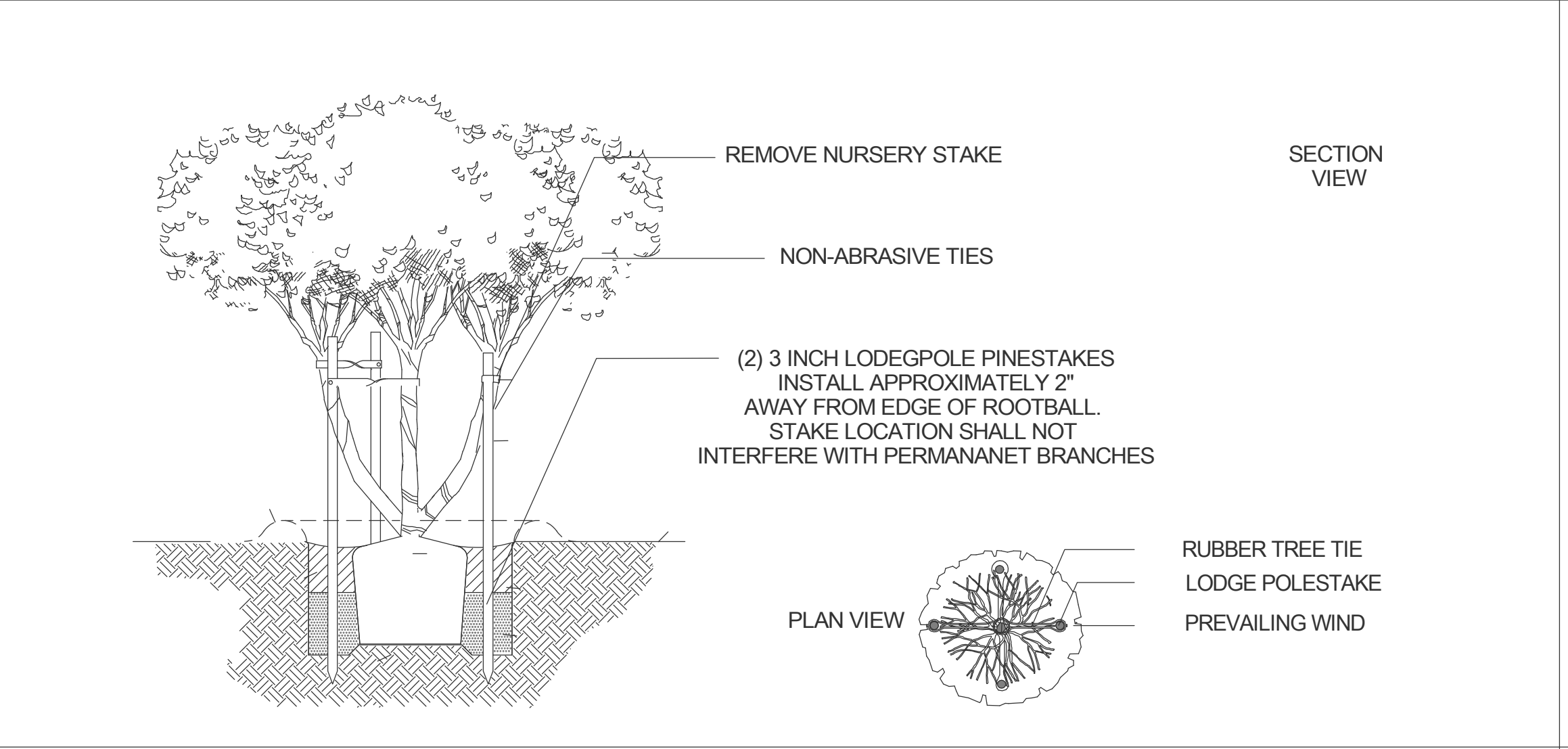
COUNTY OF SAMPLE	
LOT	TRACT
APN	HOME
LANDSCAPE PLAN	



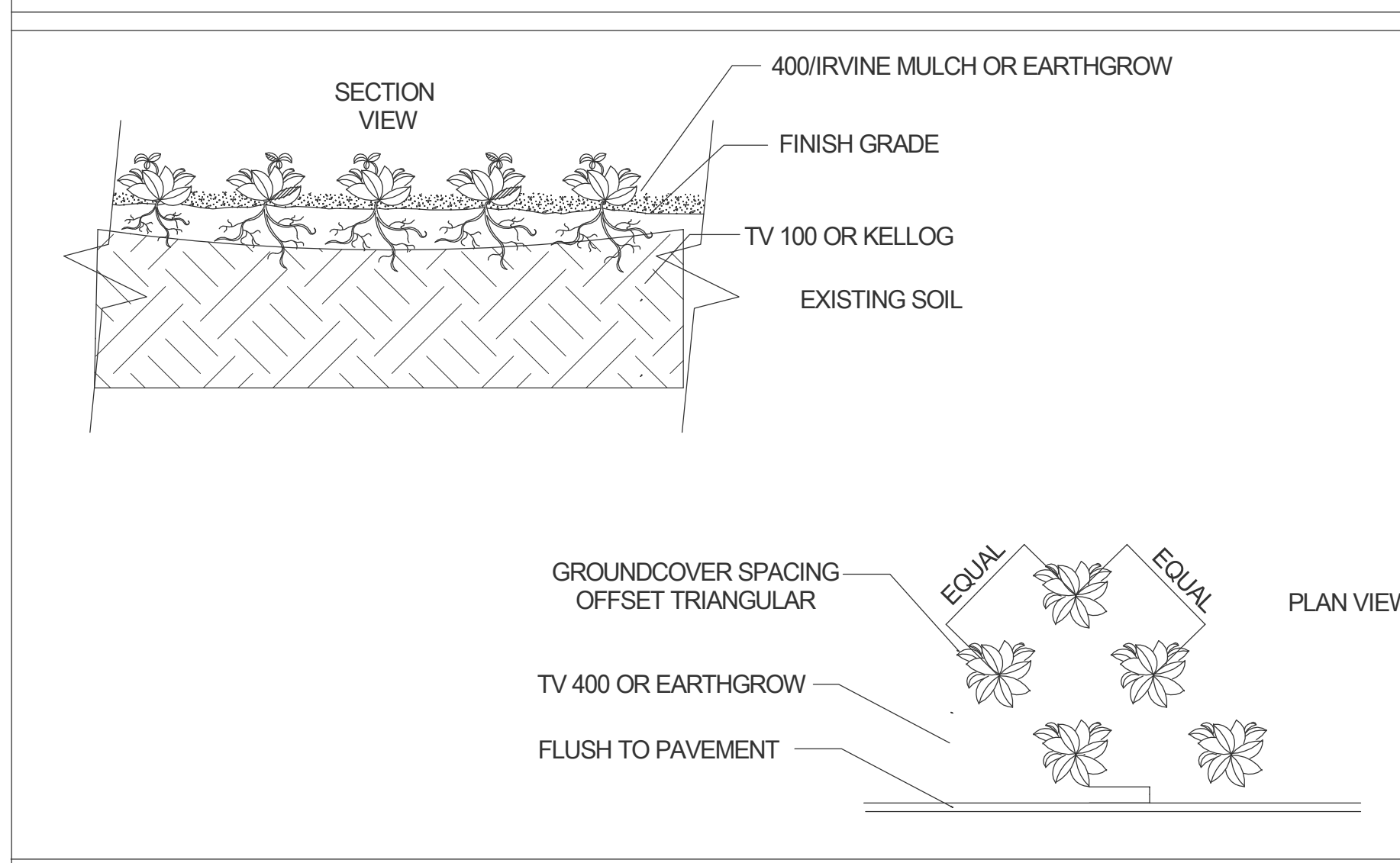
SINGLE TRUNK BOX TREE STAKING



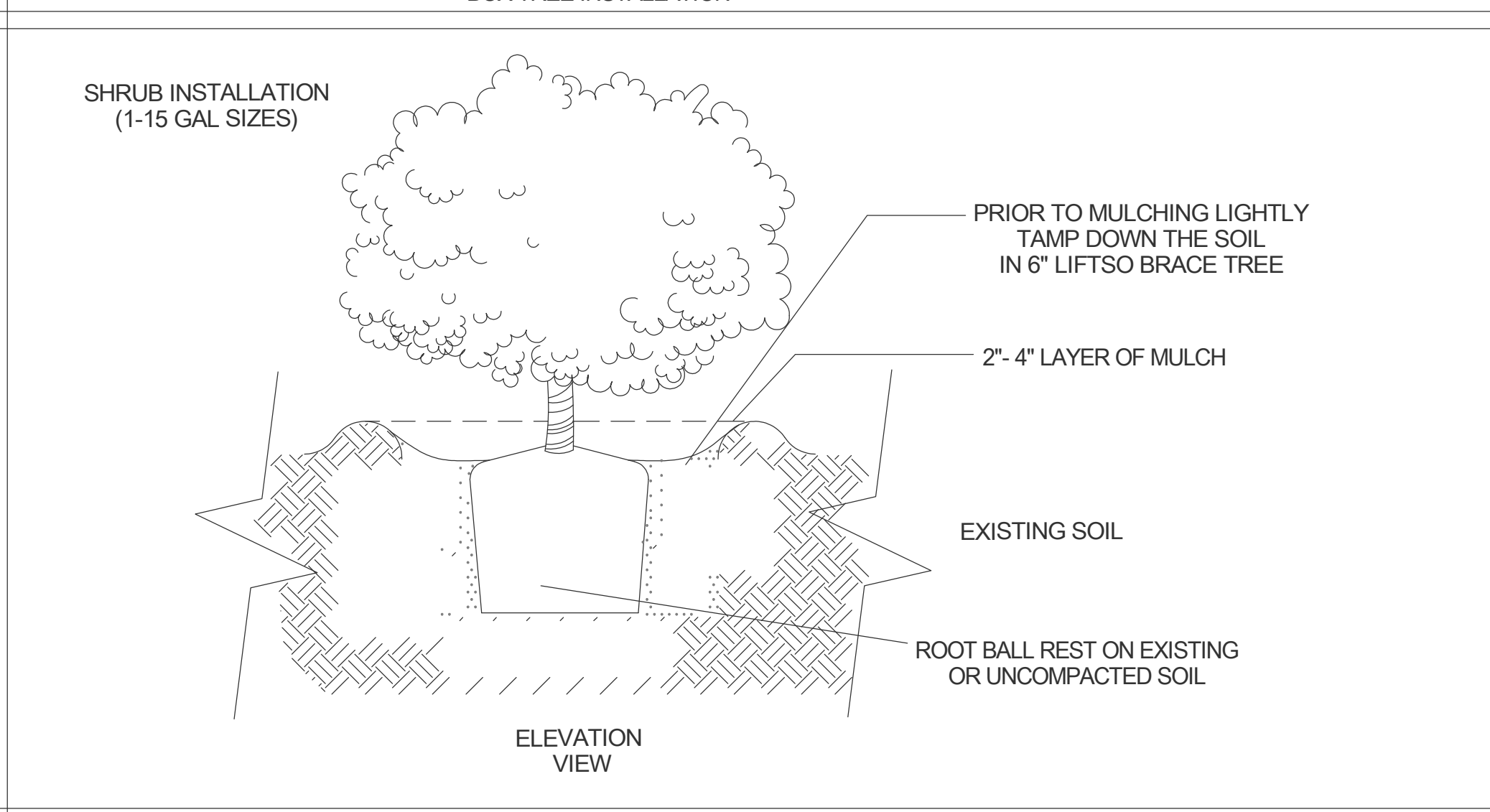
BOX TREE INSTALLATION



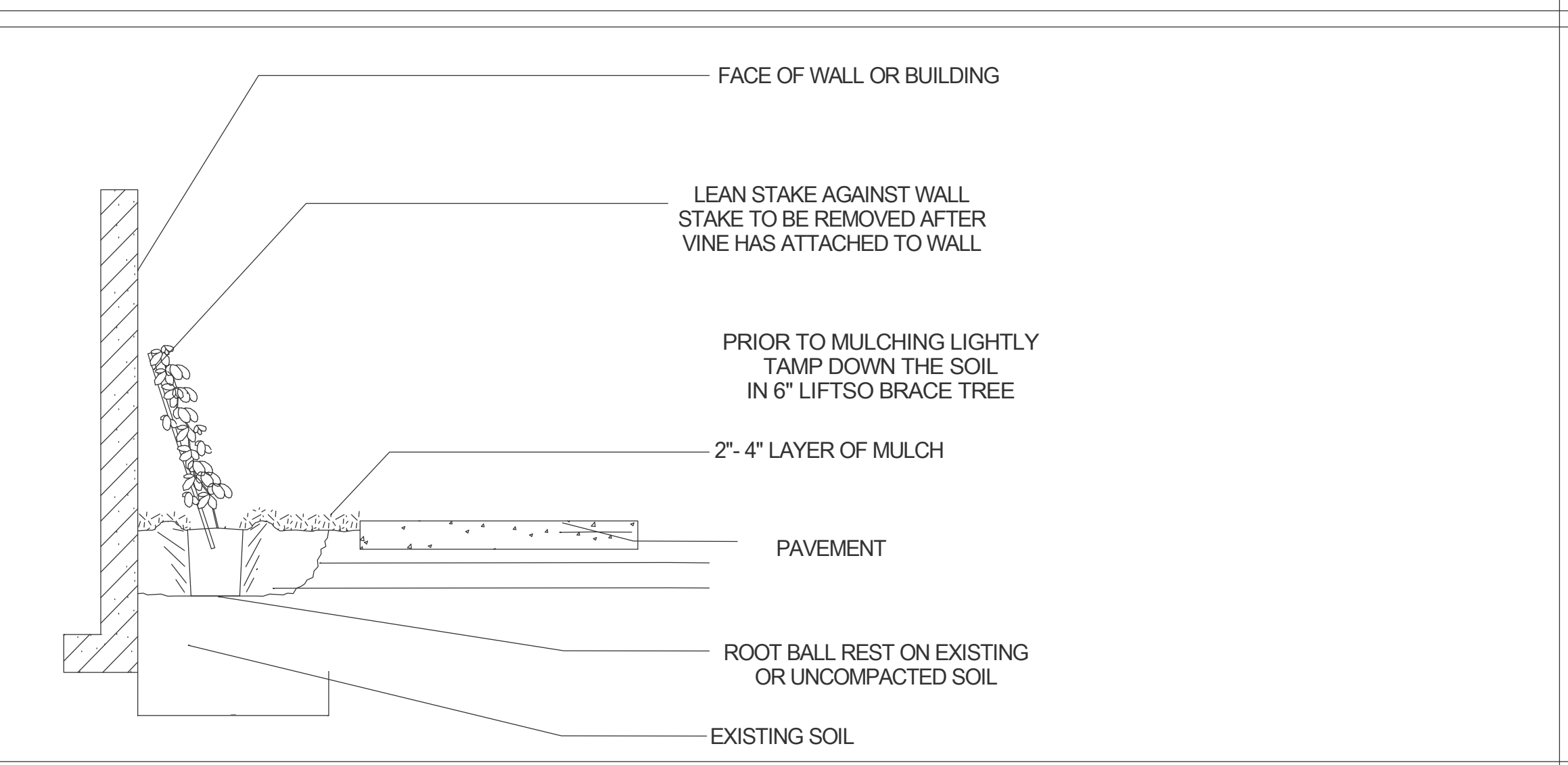
MULTI TRUNK STAKING



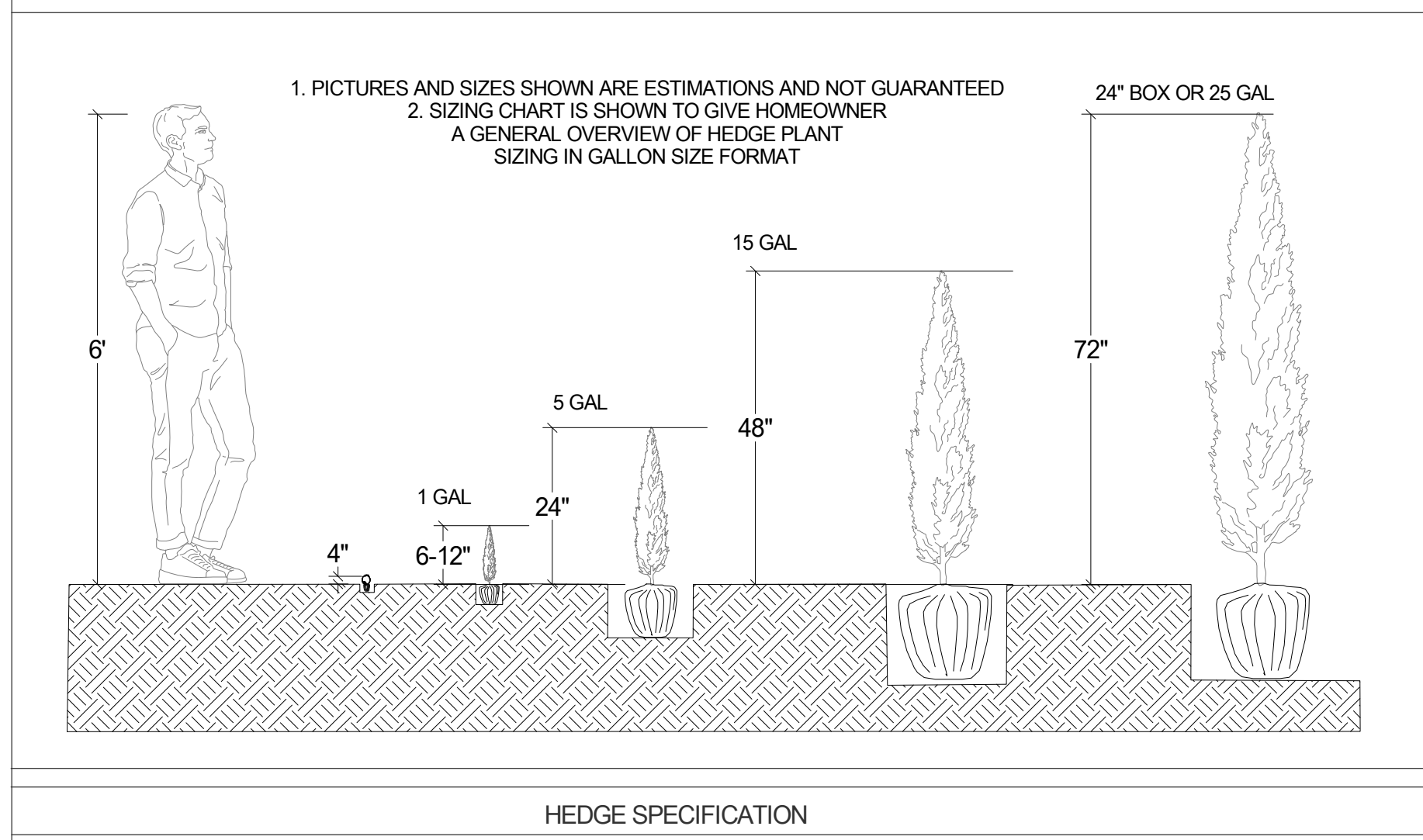
GROUND COVER SPACING DIAGRAM



1-15 GALLON SHRUB INSTALLATION



STAKED VINE INSTALLATION

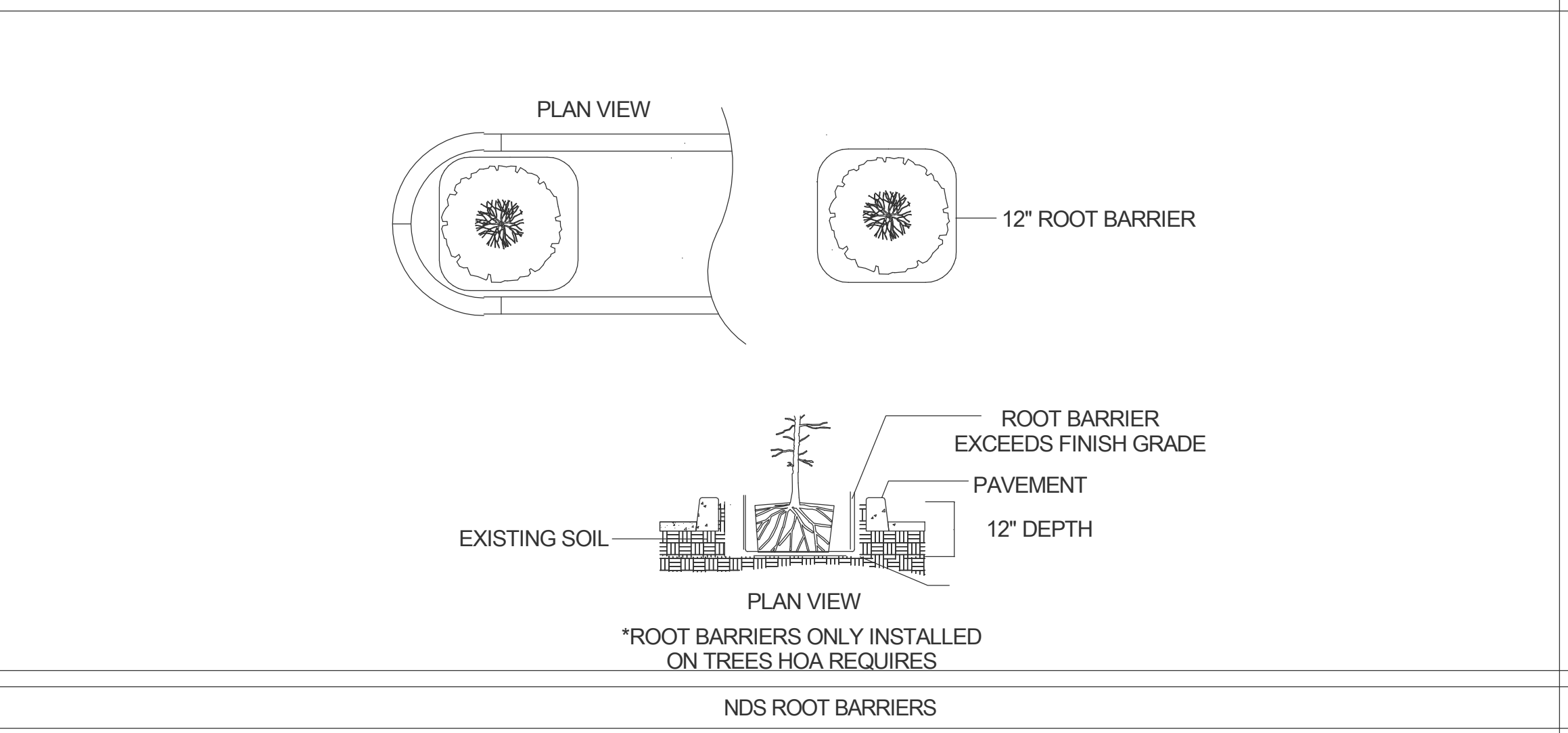


HEDGE SPECIFICATION

FERTILIZER APPLICATION RATE 20 GRAM (20-10-5)

QTY	1 tab	2 tabs	7 tabs	15 tabs
SIZE	1	5	15	24

FERTILIZER APPLICATION



NDS ROOT BARRIERS

PLANT INSTALLATION SPECIFICATIONS

1.1 IMPORTED TOPSOIL

A. Imported Topsoil definition: Fertile, friable soil containing less than 5% total volume of the combination of subsoil, refuse, roots larger than 1 inch diameter, heavy, sticky or stiff clay, stones larger than 2 inches in diameter, noxious seeds, sticks, brush, litter, or any substances deleterious to plant growth. The percent (%) of the above objects shall be controlled by source selection not by screening the soil. Topsoil shall be suitable for the germination of seeds and the support of vegetative growth. Imported Topsoil shall not contain weed seeds in quantities that cause noticeable weed infestations in the final planting beds. Compost shall comply with the following parameters:
 Product is to be composted by a State or County licensed composter/mulcher for a minimum of 120 days at temperatures of 120° to 150° and conform to CA state specification guidelines for compost. E. May not contain plastic, biosolids (sewage sludge) or other debris. (1% Plastic Allowable) Use rate is 3" to 4" for slopes and planters.
 Use a rate of 6 cu. yd. per 1000 sq. ft., rototilled into top 6" of soil. Use up to 40% mix with original soil.

1.2 INSTALLATION OF COMPOST TILL LAYER

A. After Planting Soil Mixes are installed in planting bed areas and just prior to the installation of shrub or groundcover plantings, spread 3 - 4 inches of Compost over the beds and roto till into the top 4 - 6 inches of the Planting Soil. This step will raise grades slightly above the grades required in paragraph "Fine Grading". This specification anticipates that the raise in grade due to this tilling will settle within a few months after installation as Compost breaks down. Additional settlement as defined in paragraph "Planting Soil and Planting Soil Mix installation" must still be accounted for in the setting of final grades.

1.3 MULCHING OF PLANTS

A. Apply 2-3 inches of mulch before settlement, covering the entire planting bed area. Install no more than 1 inch of mulch over the top of the root balls of all plants. Taper to 2 inches when abutting pavement. B. For trees planted in lawn areas the mulch shall extend to a 5 foot radius around the tree or to the extent indicated on the plans. Lift all leaves, low hanging stems and other green portions of small plants out of the mulch if covered. C. Planter Mulch shall consist of 3" minus organic composted hummus and wood. D. Product is to be composted by a State or County licensed composter/mulcher for a minimum of 120 days at temperatures of 120° to 150° and conform to CA state specification guidelines for compost. E. May not contain plastic, biosolids (sewage sludge) or other debris. (1% Plastic Allowable) Use rate is 3" to 4" for slopes and planters.

1.4 STORMWATER POLLUTION PREVENTION NOTES

stormwater pollution prevention devices and practices shall be installed and/or instituted as necessary to ensure compliance to the city water quality standards any erosion control plan associated with this project. all such devices and practices shall be maintained, inspected and/or monitored to ensure adequacy and proper function throughout the duration of the construction project. compliance to the water quality standards and any erosion and sediment control plan associated with this project includes, but is not limited to the following requirements. 1. an effective combination of erosion and sediment control measures (brmps) shall be implemented to protect the exposed portions of the site from erosion and to prevent sediment discharges 2. sediments and other pollutants shall be retained on site until properly disposed of, and may not be transported from the site via sheet flow, swales, area drains, natural drainage courses or wind. 3. stockpiles of earth and other construction-related materials shall be protected from being transported from the site by the forces of wind and water flow. 4. fuels, oils, solvents, and other toxic materials shall be stored in accordance with their listing and are not to contaminate the soil and surface waters. all approved storage containers are to be protected from the weather. spills must be cleaned up immediately and disposed of in a proper manner. spills may not be washed into the drainage system, nor be allowed to settle or infiltrate into soil. 5. excess or waste concrete may not be washed into the public way or any other drainage system. provisions shall be made to retain concrete wastes on site until they can be disposed of as solid wastes. 6. trash and construction solid wastes shall be deposited into a covered receptacle to prevent contamination of rainwater and dispersal by wind. 7. sediments and other materials may not be tracked from the site by vehicular traffic. the construction entrance roadways must be stabilized so as to inhibit sediments from being deposited into the public way. accidental deposits shall be swept up immediately and may not be washed down by rain or other means. 8. stormwater pollution prevention devices and/or practices shall be modified as needed as the project progresses to ensure effectiveness.